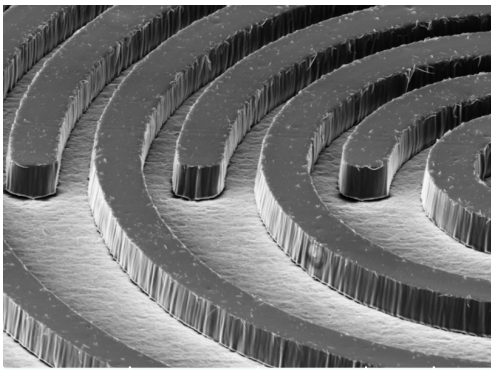




Collimated High Power **UV-LED Exposure**



- **Savings in Running Cost up to 90%**
- **New certified Technology**
- **No maintenance cost**
- **No Mercury emissions**
- **Life time of LED > 50'000h**



- **High resolution line/space result**
- **Collimated High Power UV-LED**
- **Highest stability of film dimension**
- **No heat to film. Cold light technology**
- **For dry film and solder mask**
- **Short exposure time 1"/10mJ**

Licht	Resist	R/L/S	Keil	t
LED 385nm	Hit 6240	30/33/27	7	

Expomat UV-LED



- **Highest efficiency UV-Exposure worldwide**
- **NEW: Clamp technology for FPC**
- **Film cleaning inside machine during production. Selectable cycle.**
- **High productivity with optical CCD-camera pre centering of panels.**